

Jamie Colavecchi
Artist Bio

I am Jamie Colavecchi, a whimsical fiber and mixed media artist deeply rooted in the cherished traditions of my family. From the moment my mother taught me to use a crochet hook and my grandmother handed down her beloved sewing machine, my artistic journey has been a passionate and colorful exploration.

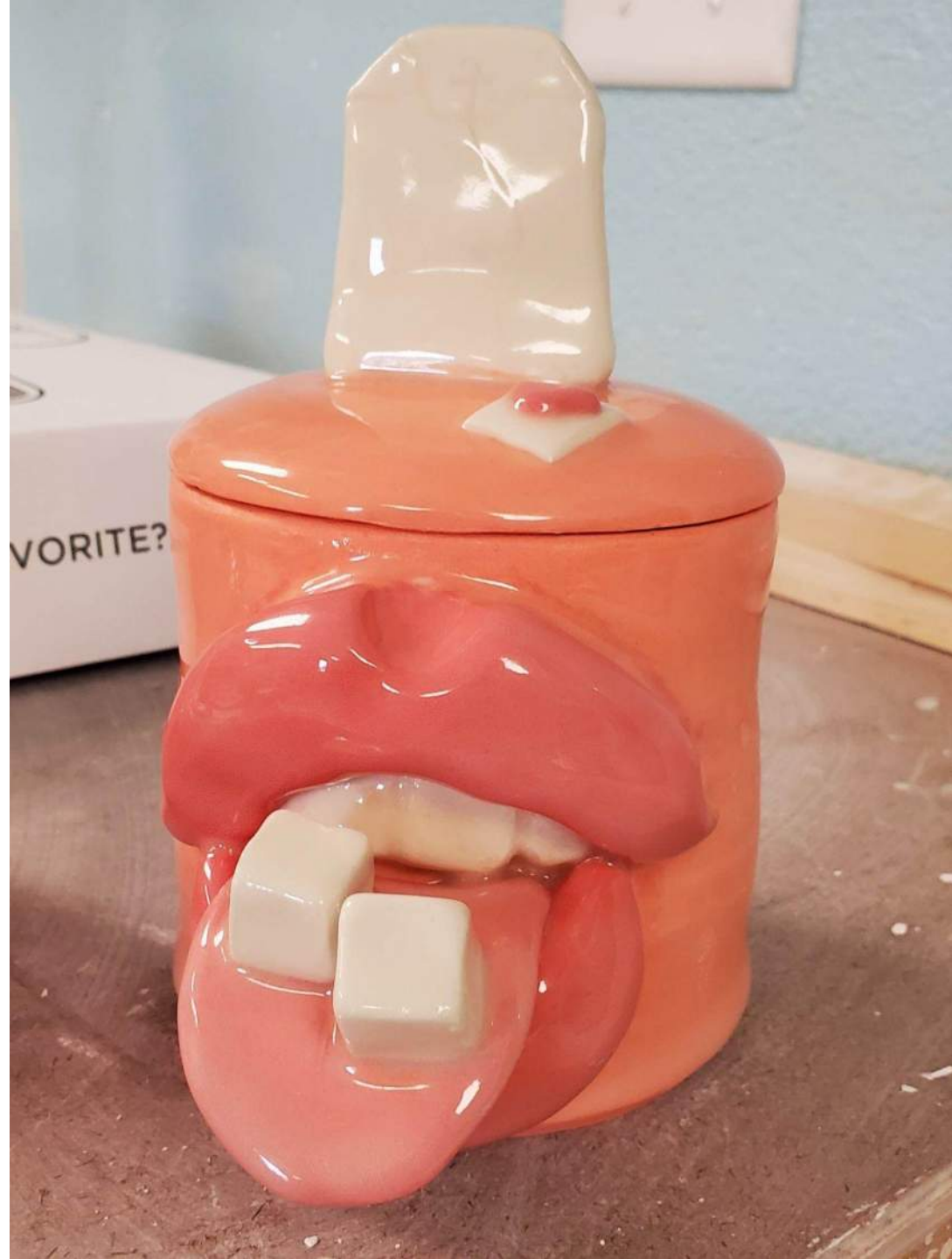
In the world of yarn and threads, I proudly hold the title of Evergreen State Grand Champion of Needle Arts, a recognition of my ability to infuse intricate creations with narratives and aspirations. Beyond my artistic pursuits, I'm an educator and demonstrator, igniting curiosity at fairs, festivals, farms and schools with my trusty spinning wheel or a bag of clay by my side. My knack for inspiring and connecting with people from all walks of life is a defining feature of my work.

I believe in engaging the senses: the textures of paint and glaze, the warmth of yarn, the smells of a shared meal. I create pieces that are meant to be worn, sipped from and touched, making my work a song of love, creativity and the sheer delight of bringing people together in shared moments of joy and connection.

JAMIE COLACECCHI









ALICE



la vita
colorata

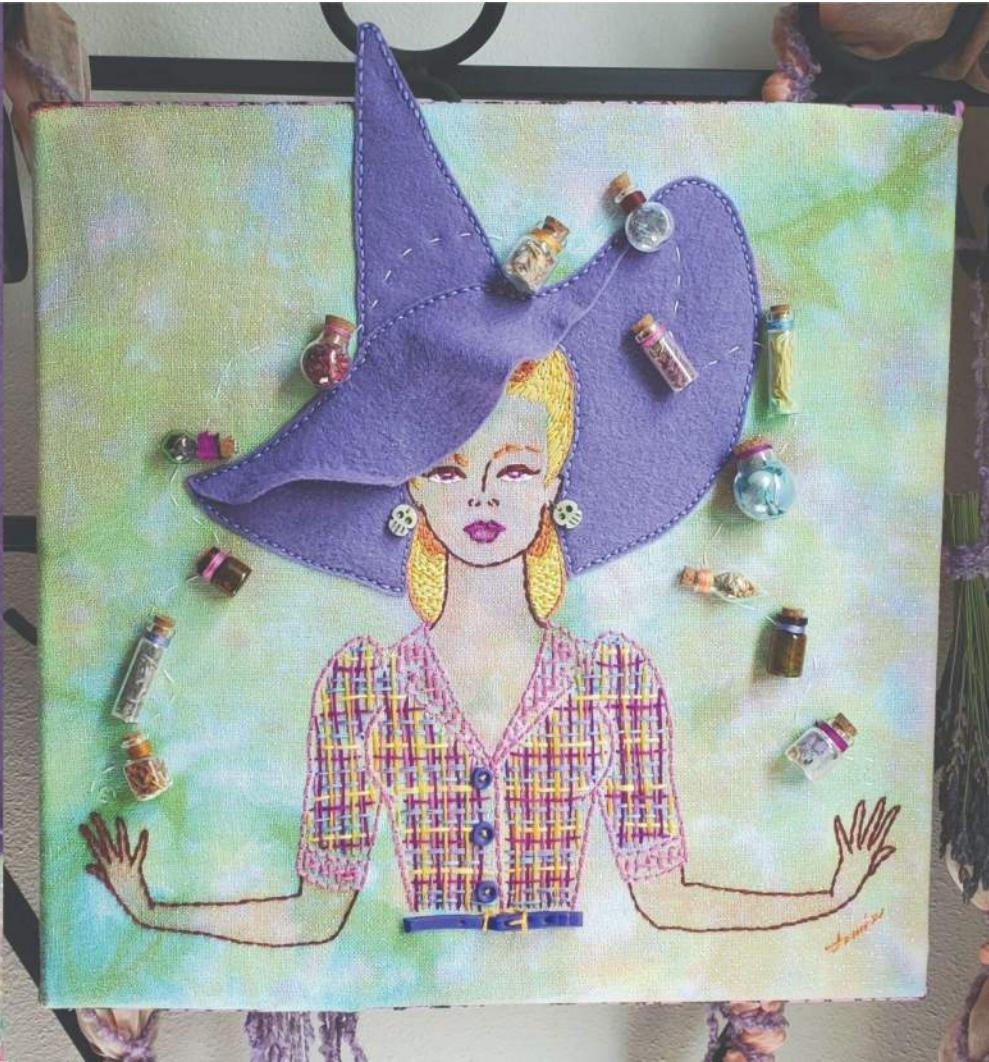
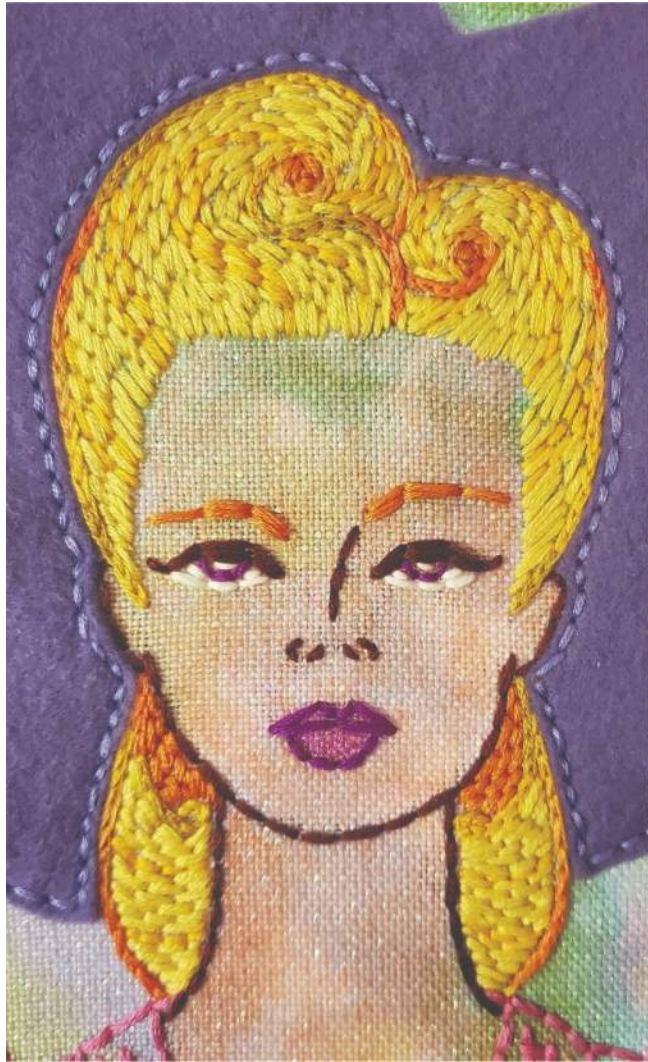
*Needle Crossed & Hometown Candle Co
present Candles for Creativity*

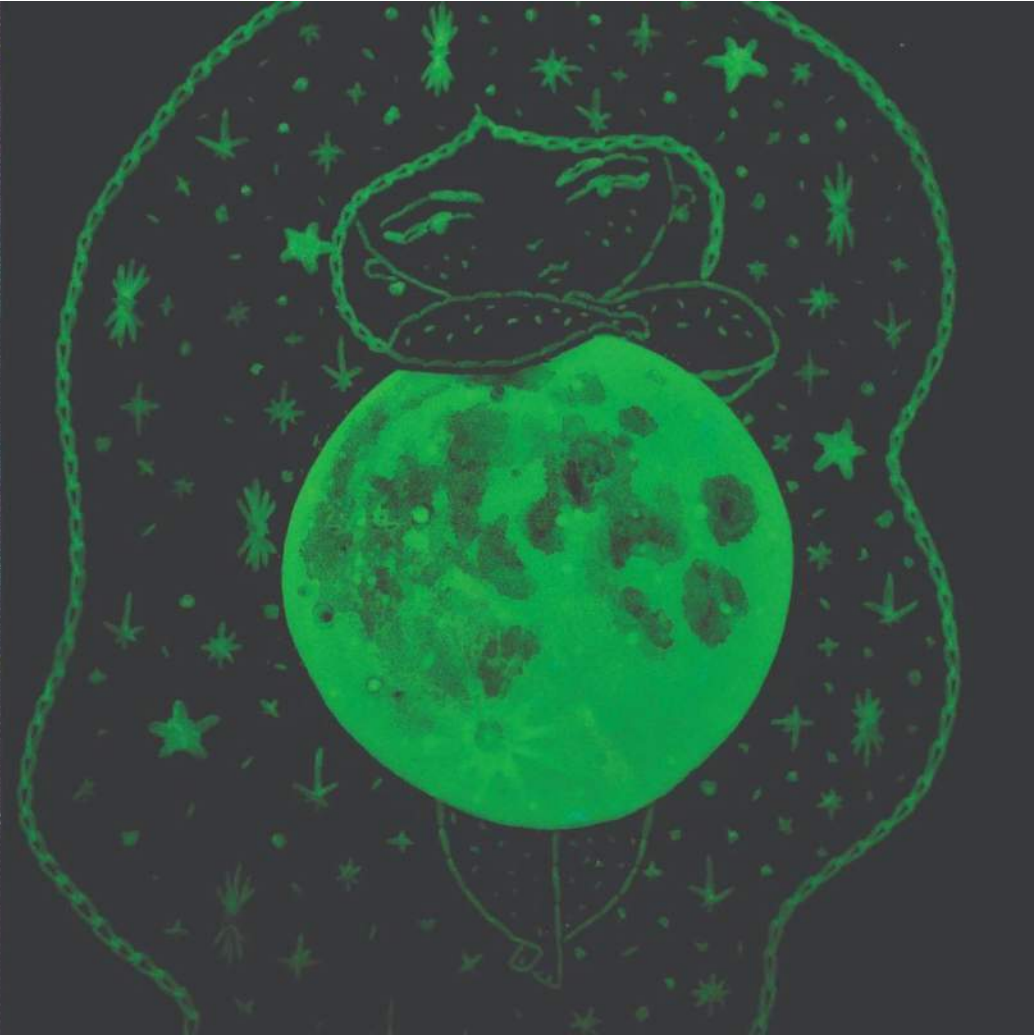


BERGAMOT
for peacefulness

EX LIBRIS

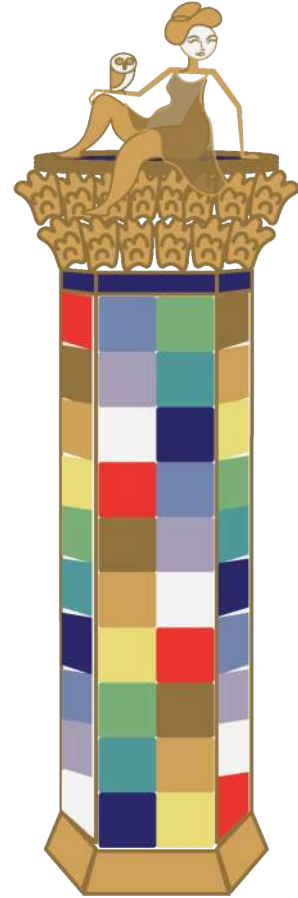








Concept Proposal



Tile Mockup Sketch



This mockup has been designed using images from Flaticon.com

Drawing inspiration from the rich ceramic tradition of Italy, especially the Deruta-style in the Umbria region where my family's from, I am deeply committed to honoring this historical practice in my design. Ceramics have played a significant role in Italian culture and I am enthusiastic about infusing this tradition into my work.

Design Concept

My proposed design centers around an octagonal column adorned with raised-line ceramic tiles. These tiles will serve as a canvas for vibrant graphics that encapsulate Italian heritage. They will tell the compelling stories of our collective memory, from heartwarming moments shared around food and family, to the language, music and narratives of migration.

Natural Integration

At the pinnacle of the column, I plan to incorporate elements of Washington's natural beauty. A Roman Corinthian column style will crown the artwork, adorned with intricate leaves and flowers inspired by native species like hemlock, fir, red maple and Pacific rhododendron. This integration pays homage to the natural surroundings of the Central District and symbolizes the harmonious coexistence of Italian culture within this vibrant environment.

Minerva: Symbol of Wisdom & the Arts

At the very top of the pillar, a bronze sculpture of a modern Minerva with her symbol, the owl (modeled on the native Northern Saw-Whet species), will stand as a blessing to the neighborhood. Minerva, known for her association with wisdom, education and justice, embodies the ideals we aim to foster in the community. Furthermore, she serves as a patroness of the arts, crafts and commerce, connecting Italian heritage to the broader Washington state history of creativity and enterprise.

This design aims to create a multifaceted artwork that not only celebrates Italian heritage but also harmonizes with the local environment, forging a deeper connection between culture and nature within the Central District.

Additional Considerations

I'm also keen on incorporating phosphorescent elements into the artwork. It's fascinating to note that an Italian alchemist was among the pioneers in discovering luminescence. In fact, there are ongoing studies by Italian scientists on the applications of phosphorescence, particularly in enhancing energy efficiency and safety in urban environments.

Incorporating glow-in-the-dark glazes or industrial-grade paints and pigments into the ceramic building and finishing process is entirely feasible. To illustrate, I've provided a small example tile featuring a Pizzelle cookie with anise seed pods below. This would add another dimension to the artwork that allows it to be appreciated through the night and also echoes the light feature of the installation shared by all seven participating artists. I'm eager to explore this concept further and expand on its potential!



Combined Artwork with all 7 Artists

I'm enthusiastic about the prospect of collaborating with fellow artists to celebrate our diverse cultures together! Some of my most cherished memories involve sharing cultural traditions, often centered around delicious meals. I believe it would be a delightful idea to celebrate our unique signature dishes as part of this project.

Incorporating illustrations that harmonize with the solar-powered and light source design, along with including recipes, could be an engaging way to open up the creative process to the community and make the art even more accessible. It's a wonderful opportunity to invite the community to participate and share in the rich tapestry of our cultures. I'm willing to disclose the secret Colavecchi family spaghetti sauce recipe in honor of this noble cause! 😊

Community Engagement

The ceramic tile design approach I'm proposing, known as raised-line tile, offers a unique accessibility aspect that could lend itself to a community decorating event. This method can be prepared to facilitate a paint-by-number approach, making it inclusive and approachable for individuals who may not have prior experience with traditional pottery and glazing techniques.

What makes this approach truly special is that it allows residents to see pieces they have contributed to installed in their own neighborhood. It becomes a collaborative effort, and each tile becomes a tangible representation of the collective spirit and creativity of the community. This shared neighborhood legacy ensures that the artwork is not just a static installation but a living testament to the community's involvement and artistic expression.

Thank you!

I am dedicated to delivering the final design and construction documents within the provided timeline. My interdisciplinary approach to art ensures a unique and engaging final product.

I am honored to have the opportunity to contribute to the Garfield Super Block Coalition's mission. My proposal will encapsulate the Italian community's vibrant journey and offer a captivating experience for park visitors.

Thank you for considering my submission.

Warm regards,

Jamie Colavecchi

jamiecolavecchi@gmail.com

425-367-2134

